

## Connect Newslitt Issue 14 11<sup>th</sup> September 2005

### CMWB Regional Consumer Network

Welcome to the Connect Newslitt Issue fourteen.

#### Housing Project Update

John Wade has developed a Housing Project Newsletter. If you receive your Newslitt through the post you will find one enclosed, if you receive your Newslitt by email it will be an attached PDF file and if you can not open it please ask for a hard copy and we will be pleased to post you one out.

#### Consumer Caucus

Consumer Caucus for next month will be on Thursday the 20<sup>th</sup> October here at the Network.

#### Employment Vacancies

Te Korowai Aroha's Central office has two vacancies for part-time Consumer Advisors 28hrs per fortnight. Please contact Allan Perry for a job Description. Ph 813 9561.

Arahura are looking for an MYOB whiz with plenty of expertise with MS Office suite. Strong organisational skills and communication skills essential. Start asap contact Stephanie to apply [admin@arahura.org.nz](mailto:admin@arahura.org.nz) or postal PO Box 47729 Ponsonby, or fax 815 4451.

#### Resource Room Update

The developments of the Resource Room are really exciting and we are pleased to be able to have Barbara on board who is volunteering her hours as part of her mental health studies. Anyone who has books relating to recovery and mental health issues that would like to donate them to the library we would very much appreciate this. Contact myself.

The opening of the Resource room has been brought a day forward to Thursday 13<sup>th</sup> October 05. Further details will follow.

#### Recovery Conference

We are very much looking forward to the Recovery Conference that is being held for the very first time out west. Details for the event are included with your newsletter.

#### Network Coordinator Position for the Auckland Region

Interviews for this position are happening next week.

#### Te Tai Tokerau Whai Ora Network (tttwn)

This is the Northern Consumer Network based in Whangarei. After a lot of hard work they have recently become a registered Charitable Trust. Congratulations guys' fantastic team work.

#### Confidential Forums

For those of you who are involved in some way with the forums Kia Kaha, stand strong and take care.

#### Mental Health Week 10<sup>th</sup> – 16<sup>th</sup> October '05

The theme of mental health week this year is 'Mood and Food' look out for events during this week.

### Film Festival

The following films have been recommended to us by the organiser of this Film Festival. Concession's to the films are mentioned at the end of the film descriptions. Some of them look like films not to be missed.

**NEW ZEALAND INTERNATIONAL DOCUMENTARY FILM FESTIVAL  
2005  
Academy Cinema, Auckland 15 Sept – 28 Sept  
The Paramount, Wellington 29 Sept – 5 Oct  
DOCUMENTARIES ABOUT MENTAL ILLNESS:**

On the 15<sup>th</sup> of September, the First Australasian dedicated documentary film festival will be launched. "DOCNZ" or the NZ International Documentary Film Festival will take place at the Academy Cinema from the 15<sup>th</sup> to the 28<sup>th</sup> of September and at Wellington from the 29<sup>th</sup> of September till the 5<sup>th</sup> of October.

The Festival is an unprecedented showcase of 118 documentary works from all over the world with a quarter from New Zealand. We believe there will be a number works which will be of great interest to your organization and members. In particular, we would like to draw your attention to the following films, summaries of which are available from the programme on our website, [www.docnzfestival.com](http://www.docnzfestival.com):

**DARK HORSE (NZ 2003 )  
SCREENING 2.10 PM WED 28 SEPT**

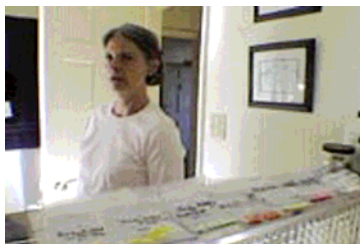


Genesis Potini, speed chess maestro of Ngati Porou descent, runs opponents up against the clock, often trash-talking his way to victory. But he also has to manage his severe bipolar disorder, which has made him an upfront advocate for Mental Health consumers. Dark Horse follows Genesis in his twin roles, as he juggles genius and his mental illness. An inspiring story of a remarkable individual.

“..AN INSPIRING AND ENERGETIC FILM THAT IS ALSO A FASCINATING STUDY OF AN EXCEPTIONAL MAN” – PETER CALDER NZ HERALD

\*\* “A SIMPLY WONDERFUL FILM” – KIM HILL\*

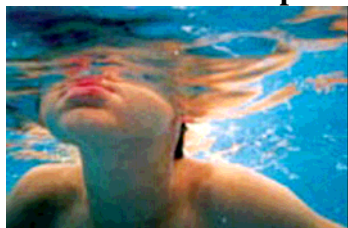
**OUT OF THE SHADOWS ( USA 2004 )  
SCREENING 4.40 PM MON 19 SEPT**



This very personal documentary chronicles the filmmaker's mother, Millie, and her family through Millie's battle with schizophrenia, and her subsequent trials within the public health system. Millie was just 25 with two small children when she was first plagued by the symptoms of schizophrenia. As mental chaos overwhelmed their mother, Susan and her sister Tina, struggled to

cope with her. For years, the family's ignorance and shame kept Millie's behaviour shrouded in a veil of secrecy. When her children left home, Millie's life unravelled completely. Now, after 20 years of transience and inadequate care, Millie finally has a chance to reclaim her life.

**ALEXANDER (NZ 2004 ) - short – SCREENING:  
AUCKLAND / 2.10 pm WED 28 SEPT**



The story of Alexander, an autistic boy, and his parents and the challenges they face. Winner of a Media Peace Award in 2004.

**SUCKERFISH (CANADA 2004 ) - short – SCREENING:  
AUCKLAND/ 3.20 pm THURS 22 SEPT, 5.55 pm SAT 24 Sept  
WELLINGTON / 1.00 pm TUES 4 OCT**



When she was ten, Lisa Jackson fled Toronto to live with relatives in Vancouver to escape her mother's depression, alcoholism and prescription drug abuse. Now sitting through her memories and her mother's letters, she constructs a portrait of a mother whose drive to love her daughter triumphed over the demons of addiction. Animation, childhood photographs, and stylised recreations add to this moving, whimsical and at times humorous look at the director's relationship to her mother and native identity.

This is a small selection of our festival documentaries which range in terms of topics from art, philosophy, dance, medical, music, political, New Zealand interest, media, human rights, the environment, history and religion to name a few.

The screenings will be taking place at the Academy in Auckland and at the Paramount in Wellington. The Academy in particular, given its size has limited seats and we would encourage you to book your tickets as soon as you can to avoid disappointment. Ticket concessions and bonus cards are available ( Opening and Closing nights excepted ) for multiple purchases and special prices apply for various cardholders ( for Auckland ph 09 373 2761 [www.academy-cinema.co.nz](http://www.academy-cinema.co.nz) and Wellington ph Wellington 04 384 4408 [www.paramount.co.nz](http://www.paramount.co.nz)

Additional discounts will apply for group bookings per screening as follows

- group of 50 or more @ \$8 per ticket and
- group of 100 or more @ \$6 per ticket

Interest has been very strong in this highly anticipated festival and we look forward to bringing you this diverse, entertaining and thought provoking collection of documentary films under one roof for the next 3 weeks.

Our programme can be found on our web-site [www.docnzfestival.com](http://www.docnzfestival.com)

Details as to ticket sales can be obtained from the cinemas. Concessions are available for students, current Community Service Card holders, senior citizens and various club and association members (contact the Academy ( 09 – 3732761 ) and Paramount ( 04 384 4080 ) for full list of eligible clubs and associations)

For group bookings of 50 or more, please contact for details of concessions:

**DOCNZ Festival Trust**

PO Box 90943

AMSC

Auckland

Ph: 3092613

Email: [info@docnzfestival.com](mailto:info@docnzfestival.com)

**Network operational hours are:**

9-3pm Monday - Friday

Premises: 762 Mt Eden Rd, Mt Eden. It is best to ph. before you come so that we can plan to be here.

PO Box 10 256 Dominion Rd.

Ph 623-9384 fax 623-1763 cell 021 654 896 [clairemoore@rcnet.co.nz](mailto:clairemoore@rcnet.co.nz) or Jim Campbell [networker@rcnet.co.nz](mailto:networker@rcnet.co.nz)

Any comments or feedback regarding the Network are always eagerly received.

Regards,

Claire Moore Coordinator – Regional Consumer Network